

High Capacity Compression Jig PC Series (Disc type)

Ideal for high capacity compression / breaking test up to 5000N.
Ensures accurate measurement due to free joint design.
Ideal for compression test of PET bottle or retort pouch.



PC-5100 (left), PC-5060 (middle), PC-5040 (right)




PC-5060 Testing Image

Installing jig for testing		
Fix the jig to the force gauge	Set the sample	Compress to measure

Specifications			
Model	PC-5040	PC-5060	PC-5100
Capacity	5000N		
Board attachment part	φ32mm (Magnet)		
Dimensions	See [Dimension]		
Plate diameter	φ40mm	φ60mm	φ100mm
Weight *1	Approx. 160g	Approx. 330g	Approx. 820g
Mounting thread	M10		

*1 Weight of the attachment is also applied as a load on the force gauge. Consider it when selecting the capacity of a force gauge.



Examples of Product Configuration PC-5100	
<p>Example 1 Code: 1P2013A For functional and versatile testing up to 5000N</p> <p>Digital Force Gauge: ZTS-5000N Motorized Test Stand: MX2-5000N Optional Attachment: PC-5100 Optional Cable: CB-528 *1</p>	 <p>PC-5100 Example 1 Image</p>

* Refer to specifications of each product for details.

* Product configuration varies depending on the shape and characteristic of the sample, and measurement conditions.





* The recommended capacity of force gauge varies depending on the expected force to be loaded.

*1 Durability test with predetermined force and time can be activated by using optional cable.

Mountable Force Gauge	
High Capacity ZTS/ZTA series	PHS series
Digital force gauge with high precision, featuring high sampling rate and a variety of useful functions.	Mechanical force gauge for easy handling.
	

* Refer to specifications of the individual product for details.

* Select suitable force gauge to correspond with the mounting screws of attachment.

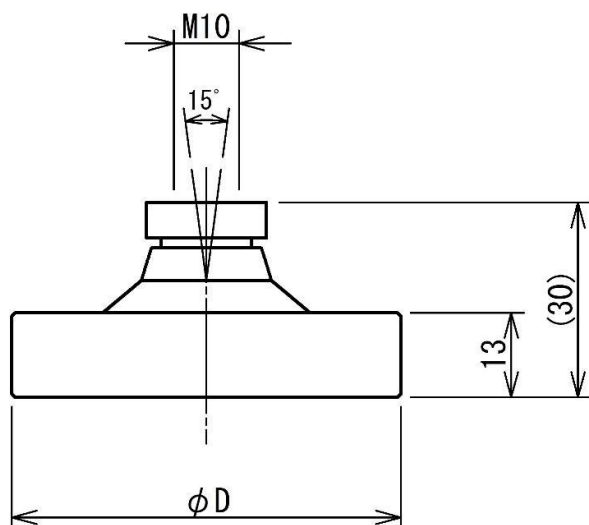
Related Products		
High Capacity Compression Jig [Rectangle type] SQ series	High Capacity Compression Jig [Spherical type] SP series	Durability Test Fixture PR-500N/2500N
Ideal for high capacity compression/ breaking testing up to 5000N. They can contact a test samples closely due to a free joint design.	For high capacity compression and breaking test up to 5000N.	Ideal for durability tests for retort pouch, heat sealed package, up to 2500N.
		
Conversion Adapter CA series		
For mounting a M10 screw attachment to a M6 screw thread of a force gauge.		
		

* Refer to specifications of the individual product for details.

[Custom made solutions]

We offer custom made options including change of diameter, materials (stainless only), or adding air vent and slit machining. Please contact us for details.

[Dimension]



MODEL	φ D
PC-5040	40
PC-5060	60
PC-5100	100

Unit: mm

[Cautions]

- Information in this document is subject to change without prior notice.
- This document is product descriptions and handling precautions, and do not guarantee various characteristics or safety.
- This product is designed for force measurement purpose only.
- Do not copy and use this content without authorization.
- A force gauge (sold separately) is required to use this product.
- Some samples may not be suitable to measure with this product.

IMADA CO., LTD.

99, Jinnoshinden-Cho, Aza, Kanowari, Toyohashi,
Aichi 441-8077, JAPAN

Tel: +81-(0)532-33-3288

Fax: +81-(0)532-33-3866

E-mail: info@forcegauge.net

Website: <https://www.forcegauge.net/en/>



Visit our website for more information on a wide range of product specifications, measurement applications and videos.